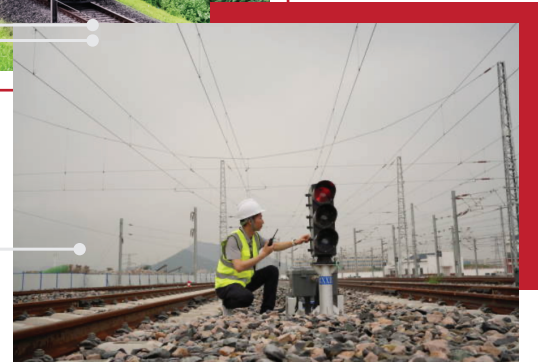


Talk *PRO*TM

KEEPING COMMUNICATIONS ON TRACK

AH350 | ANALOG
RADIO



www.talkpro.in



• Radio meets all applicable regulatory requirements • Designed as per RDSO/MHA specifications

TalkPRO AH350 is a rugged Analog Version Portable Radio designed to meet Harsh environment and with 1W gives a crystal clear voice. Despite its light weight and compact dimensions, TalkPRO AH350 is very much built for professional use and to provide reliable communications in all condition. It is Compliant with MIL- STD and offers IP67 protection against dust and immersion.



CRYSTAL CLEAR
AUDIO



LOUD FRONT
FIRING SPEAKER



NOISE CANCELLING
MIC

Key Features

- LOUD AND CLEAR AUDIO
- VOICE RECORDING (OPTIONAL)
- IP67 WATER RESISTANCE & DUST PROTECTION
- CHANNEL ANNOUNCEMENT
- EMERGENCY ALARM
- 2600 MAH LI-ON BATTERY
- TESTED BY GOVT LAB



IP67



WATERPROOF



SHOCKPROOF



DUST-PROOF

GENERAL

Type of Working	Simplex/Semi Duplex
Frequency Range	136-174 Mhz
No of Channels	32
Channel Separation	12.5 kHz
IP Rating	IP67
Weight	330 grams

TRANSMITTER

Power Output at Antenna Port	5W
Frequency Stability	± 2.5PPM
Frequency Deviation	± 2.5 kHz @12.5kHz
Modulation Sensitivity	1 to 10 mV at 1 kHz at mic. Input for (+/-) 1.5 kHz @ 12.5kHz
Modulation Distortion	Less than 5% at 1 kHz reference for (+/-) 1.5 kHz @ 12.5kHz
Modulation Fidelity	(+) 1, (-) 3dB of 6dB/Octave, 350Hz to 2700Hz @ 1 kHz
Spurious Emission	70 dB.
Hum & Noise	-34dB @12.5 kHz.
VSWR	1.5

RECEIVER

Sensitivity	0.25 µV for 12dB SINAD
Adjacent channel selectivity	60 dB for 12.5 kHz channel separation.
Spurious and image rejection	65 dB
Audio output	1W
AF Response	Between +1 dB & -3 dB , 350-2700 Hz with 1kHz ref
Squelch sensitivity	0.25 µV
Inter-modulation rejection	60 dB

OPTIONAL ACCESSORIES



Multi Unit Charger



Carrying Case



D Type Headset



Remote Mic



Heavy Duty Headset

Manufactured By

ICONET SERVICES
 102 Spur Tank Road,
 Chetpet,
 Chennai 600031.
 ☎ 044-4280 9000/ 4280 9100
 ✉ enquiry@talkpro.in
 🌐 www.talkpro.in

Dealer Stamp

